

American Employees Association (AEA)

AEA Job Bank & Emergency Employment Services Centers

AEA Health and Welfare Benefit Plans for Small Businesses & Low-Income Workers

Mississippi Disaster Emergency Relief Fund

Community Development National Trust

Community Industrial Arts Education & Training Programs for Youth

*National Endowment for the Arts
National Endowment for the Humanities*

Mississippi Arts Commission

*Clark County Health Department
Community Volunteers Coalition*

The I.P. Hunt Foundation (IPHF) has, independently and in conjunction with other local, national, and state organizations, developed and instituted the above-mentioned programs to serve the needs and interest of the community at large.

These programs are founded and intended to improve and enhance the health and well-being of the entire community by serving the needs of underserved disadvantaged and underprivileged individuals through housing, health and welfare benefit, financial literacy, disaster emergency relief, vocational training as well as education and information plans and programs for the elderly, low-income employees of independent small businesses and youth of working "poor" families.

© 2 0 0 6

**I . P . H U N T
F O U N D A T I O N**

**6655 West Sahara Avenue, Suite B-200
Las Vegas, Nevada 89146**

**702.262.9701
877.711.7751**

**www.iphuntfoundation.org
director@iphuntfoundation.org**



Mississippi Disaster Emergency Relief Fund



*"In The Shelter of Each
Other The Community
Lives" (..)*

Mississippi Disaster Emergency Relief Fund

The Mississippi Disaster Emergency Relief Fund (MDERF) is a funding initiative established by the I.P. Hunt Foundation (IPHF), a non-profit publicly supported charity founded over 27 years ago in Jackson, Hinds County Mississippi.

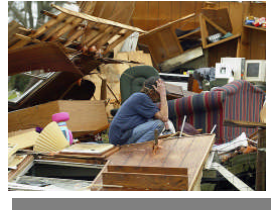
The mission of IPHF is to serve the needs of disadvantaged and underprivileged individuals through community development and education programs, projects and activities.



The MDERF program was established following the Gulf Coast hurricane disasters to develop emergency temporary and permanent housing for Seniors, orphaned children and disabled individuals.

IPHF has recently acquired a 1-1/4 acre parcel of land in Scott County Mississippi to build its primary senior facility.

The IPHF Community Development National Trust (CDNT) will administrate, manage and develop our projects.



The Need

Since the Katrina disaster many hurricane survivors throughout the country still find themselves totally dependent on the local government or community charities. Factor in displacement of hundreds of thousands of workers and other disaster survivors and low-cost housing is now becoming critical in major cities almost nation-wide.

Thousands of elderly, orphans and disabled individuals are without proper or affordable housing and find themselves under extreme financial and emotional stress which directly impacts the health and well-being of the entire community.

Who Will Benefit

Disaster impacted seniors will be the initial and primarily benefactors of our MDERF housing program.

The Vision

Our vision is to fund development and construction of emergency temporary and long-term permanent affordable housing for elderly, orphaned children and disabled disaster survivors as well as low-income "working poor" families.

The Role of the Community

In the shelter of each other the community lives.

Following Katrina, it was the people from local neighboring communities, not the government or FEMA officials, who first came to the aid of the disaster survivors.

Vital, vibrant and healthy communities can only be achieved through community-to-community partnerships.

Accordingly, we are seeking the cooperation of private individuals, corporations, business groups and public institutions to receive not only tax benefits but long-term PR and investment value for supporting this pressing initiative.

Suppliers, manufacturers, contractors, construction companies, educational institutions as well as local and national and craftsmen guilds and trade unions are invited and welcome to participate.

Donations are accepted on-line at: www.iphuntfoundation.org or by mail at our address listed below.

We thank you for your help and support!

**I . P . H U N T
F O U N D A T I O N**

**MISSISSIPPI DISASTER
EMERGENCY RELIEF FUND**

c/o U.S BANK

**Anthem Branch Office
10140 South Eastern Avenue
Henderson, Nevada 89052**

**702.262-9701 * 877.711.7751
www.iphuntfoundation.org**